



P.O BOX 429, NUKU'ALOFA, Tel: (676) 21-400 Fax: (676) 23-047 Email: afernando@tongapower.to

18 February, 2013

Lord Dalgety
Electricity Commission
Tu'atakilangi
Nuku'alofa

Dear Lord Dalgety

Compliance Reporting for the Month of February, 2013

In accordance with the reporting requirements of the Electricity Concession Contract and in response to your request for additional information as specified in the suggested MOU dated May 2012, TPL submits the following reports for the month of February, 2013.

1. System Loss Report – January, 2013
2. Reliability Measures – January, 2013
3. Monthly Outage Events – January, 2013

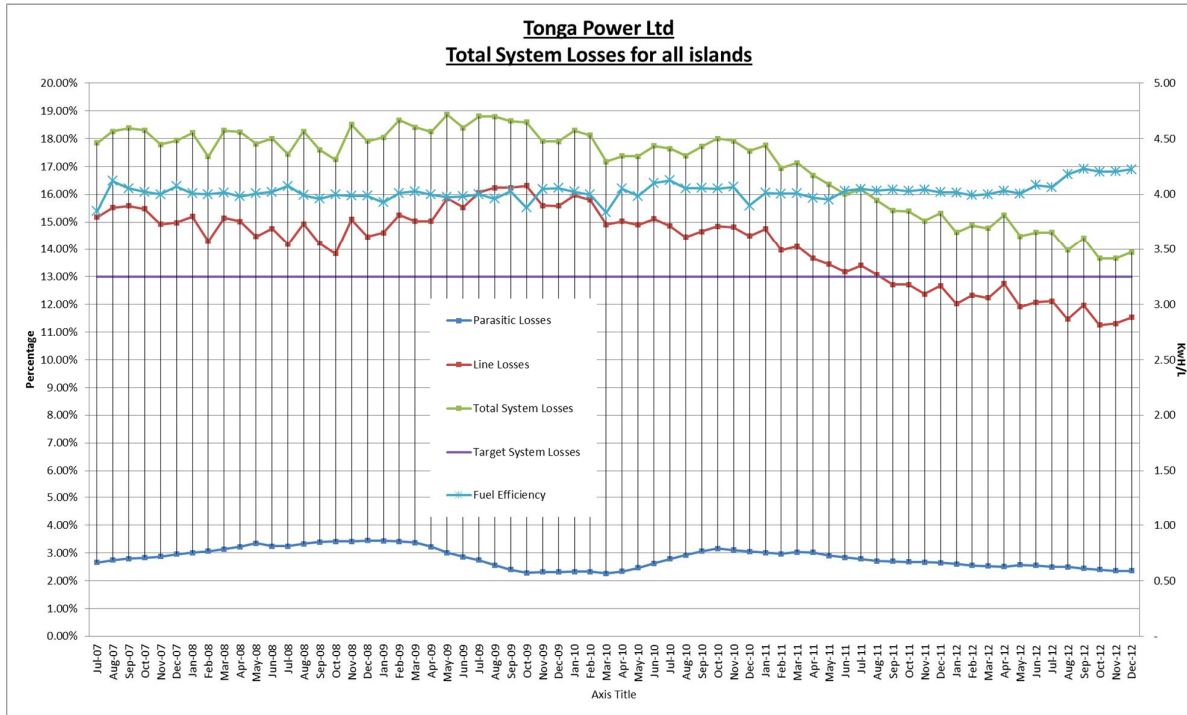
The above report items are described in detail below.

1. System Loss Report

The following graph illustrates the past 12 months moving average (smoothed) of systems losses for all four islands for the period Jul. 2007 – Dec. 2012. The graph indicates that the total losses for all four islands have slightly increased from 13.67% (in November, 2012) to 13.89% (in December, 2012). Vavau and Eua moving averages have not changed through the month but Haapai losses have increased. However, on a real time basis (disregarding 12 months moving average), overall losses have decreased from 13.79% (November, 2012) to 10.58% (December, 2012). It was also noticed on a real time basis, that Tongatapu losses have decreased 14.18% (November, 2012) to 9.68% (December, 2012).

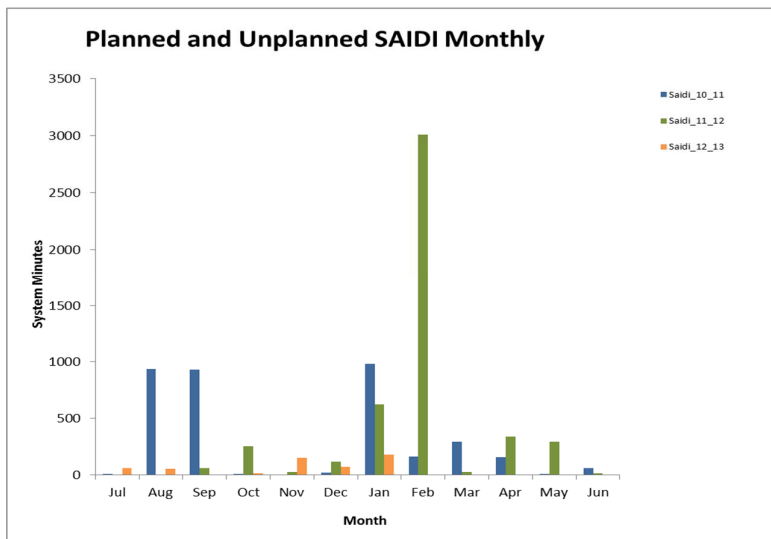
Fuel efficiency for all four islands has slightly increased from 4.21 Kwh/L in November, 2012 to 4.22 Kwh/L in December, 2012.

Please refer to the attached excel file 'System Loss Report December 2012' for further details.



2. Reliability Measures

SAIDI minutes (measuring average total duration of interruption per connected customer) for the month of January, 2013 have increased from 74.28 (December, 2012) to 177.39 (January, 2013) minutes (see the figure below).

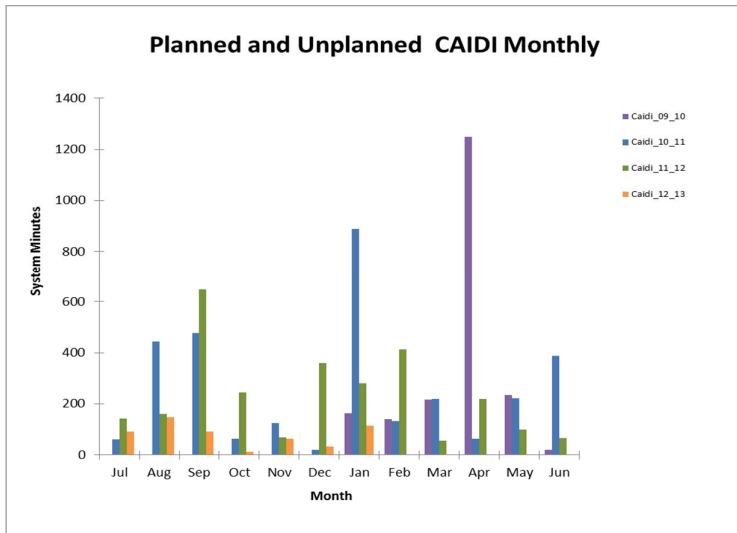


Five of the major HV faults contributed to the SAIDI losses are described below:

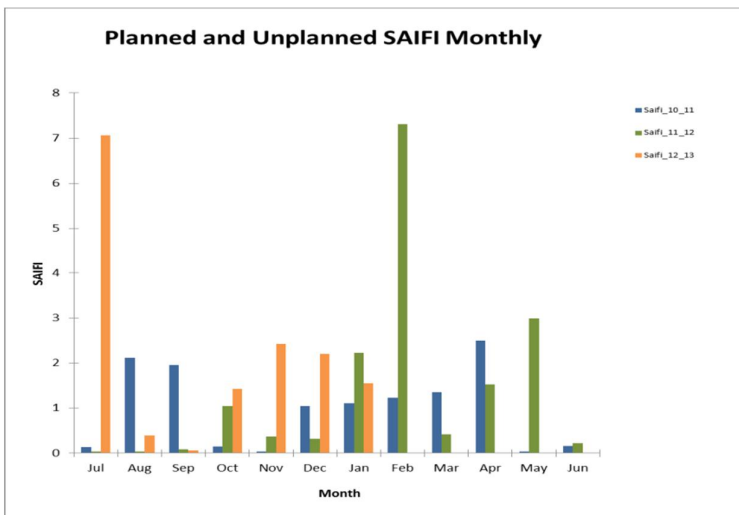
- The tail line from the HV line (Feeder 2) to the DDO fuses came loose and as result 6173 customers in Maufanga had power outages.

- At Tokomololo, two HV conductors fallen on the ground affecting 5021 customers' power supply
- Inline 15A DDO fuse burnt at Te'ekiu affecting 1500 customers.
- Nukualofa Feeder 1 was off affecting 1489 customers due to the generator outage.
- At Tokomolo, a planned shut-down was carried out due to malfunction of a air-breaker switch, 1489 customers had power outages.

CAIDI minutes (measuring average total duration of interruption per interrupted customer) for the month of January 2013 have also increased from 33.78 minutes (in December, 2012) to 114.76 (January, 2013) minutes (see the figure below).

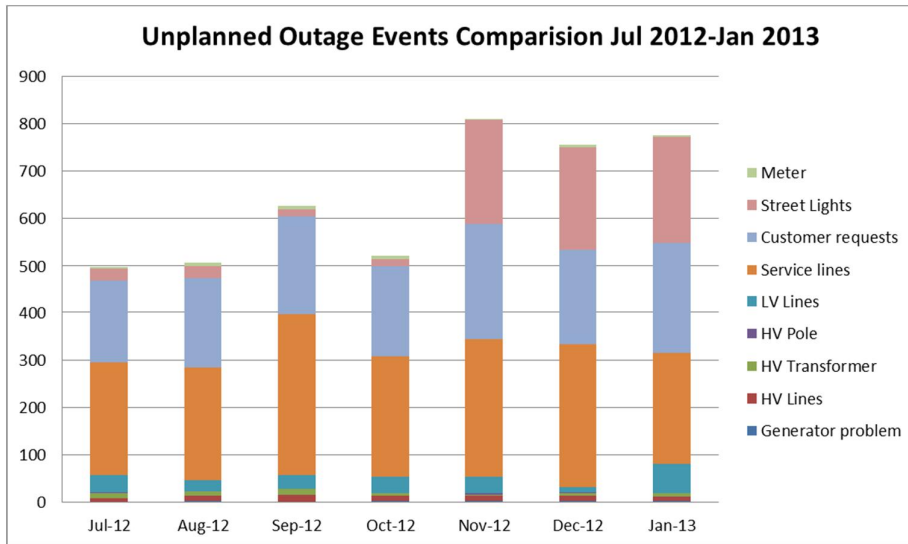


SAIFI (measuring average number of interruptions per customer); however, has slightly decreased from 2.2 (in December 2012) to 1.55 (in January, 2013). See the SAIFI graph below.



Further information on SAIDI, SAIFI and CAIDI indicators can be found in the attached excel file named Reliability Measures January, 2013.

3. Monthly Outage Events



There were total of 776 fault events for the month of January, 2013 affecting 23,632 customers. As per the graph above, the number of fault events has slightly increased to 776 events (in January, 2013) from 756 events (in December, 2012). The faults were mostly constitutes of customer (234 faults), street lights (224 faults) and service lines (235 faults). Most of the customer services faults include fuses at the service line tap off point for a premise. Most of the street light faults were caused by the poor state of street lights mainly around control box equipment. This causes the staff to receive many complaints of light strings being left off at night, or perhaps left on in the daytime.

The complete list of outage events can be found in the attached Outage Events January 2013 file.

Should you have any queries with the information provided, please do not hesitate to contact me.

Yours Faithfully,
 Ajith Fernando
 Risk & Compliance Manager
 Tonga Power Limited

Attachments:

- System Loss Report January 2013
- Reliability Measures January 2013
- Outage Events January 2013